

# Icon™ Back System with VariLock™ Hardware



**Simple**

**Streamlined**

**Secure**

# Overview

Available in 4 models:

- Low
- Mid
- Tall
- Deep

Design Features:

- Simple yet secure hardware
- Integrated permanent mount
- Aluminum shell
- Air-foam floatation cushion
- Breathable cover



# Icon™ Back System Low



- Provides lower trunk positioning
  - Pelvis & thoraco-lumbar spine
- Ideal for active users
- Enhanced rollover cushion
  - Protects user from shell edge
  - Cushion & cover roll over
  - Neoprene pad sew n to cover
- Weight 3.5 lbs for 18" wide (1.54 kg for 45 cm)
- Max user weight 300lbs (136 kg)

# Icon™ Back System Mid



- Provides lower trunk positioning
  - Pelvis & mid-thoracic spine
- Appropriate for users with fair trunk control
- Enhanced rollover cushion
  - Protects user from shell edge
  - Cushion & cover roll over
  - Neoprene pad sewn to cover
- Compatible with Fixed and PALs Laterals
- Available in Pediatric & Bariatric sizes
- Max user weight
  - 300 lbs (136 kg) for standard size
  - 400 lbs (181 kg) for bariatric size
- Weight 4.4 lbs for 18" (2.3 kg for 45 cm)

# Icon™ Back System Tall



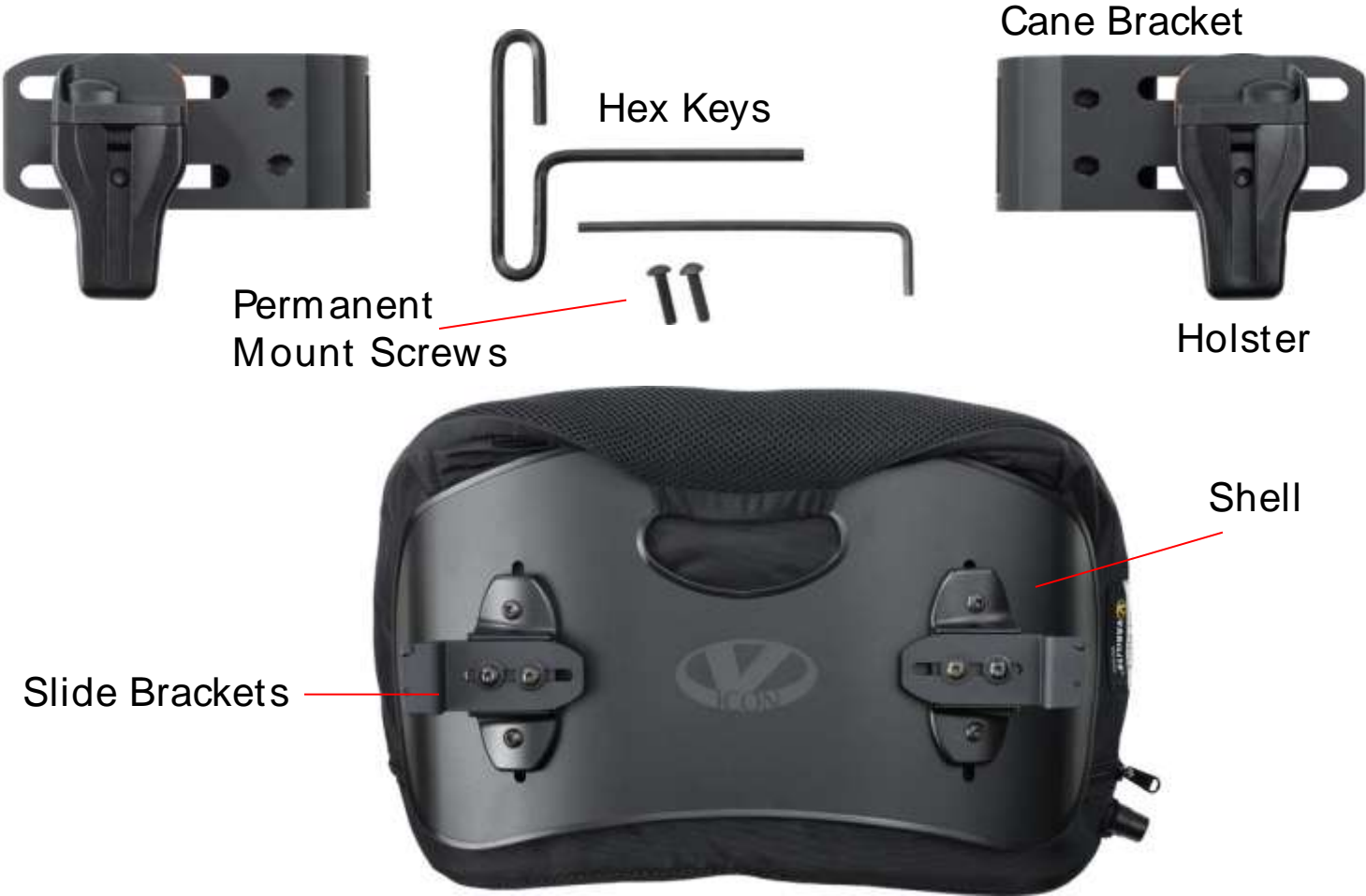
- Provides upper and lower trunk positioning
  - Pelvis, spine & scapula
- For users that need moderate support
- Standard rollover
  - Cushion & cover roll over shell
- Compatible with Fixed and PALs Laterals
- Head support can be mounted by drilling into shell
- Compatible for use with tilt/recline systems
- Available in pediatric sizes
- Max user weight 300 lbs (136 kg)
- Weight 5.6 lbs for 18" (2.9 kg for 45 cm)

# Icon™ Back System Deep



- Provides upper and lower trunk support
  - Pelvis
  - Spine
  - Scapula
  - Lateral trunk support
- For users that need maximum support
- Provides fixed lateral support at the trunk
- Standard rollover
  - Cushion & cover roll over shell
- Not compatible with Fixed or PAL Laterals
- Head supports may be mounted by drilling into shell
- Compatible for use with tilt/recline systems
- Max user weight 300 lbs (136 kg)
- Weight 6.5 lbs for 18" (3.3 kg for 45 cm)

# Hardware Components





# Hardware Features

- Quick and easy to Install
  - Two points of attachment
  - All hardware is pre-assembled
  - Durable Hardware
  - Aluminum die cast holsters
  - Custom design fasteners for shell brackets
  - One size screw requiring only one tool for installation\*

Note: Integrated Permanent Mount requires 3/32 in. hex key (included)



# Hardware Features

- Positive Locking Design
  - Will not slip once installed and adjusted
  - Adjustor plate
    - Teeth hold recline adjustment
    - Inset into cane bracket prevents rotation



# Hardware Features

- Highly functional design improves ease of use
  - Allows one handed removal of back by users/ care givers (rigid and folding chairs)
  - Adjustable with the user in the wheelchair
    - All screws are easily accessible from rear or side
    - Only one tool is needed
    - All screws are the same size (1/4" -20)
  - Time saving for clinical evaluations
    - Hardware is the same on all models and sizes
    - Allows for different models/height backs to be trialed during evaluation with no change in hardware and minimal adjustment



# VariLock™ Slide Caps

- Ergonomic design can be operated with finger, knuckle or hand
- Orange safety marking alerts user that Slide Caps are open
- Remains open for removal of the back
- Slide Caps lock securely when closed



# Integrated Permanent Mount

- For those who wish to permanently mount their back system
- Integrated into holster
- Zero movement once installed
- Only two screws and 3-32" hex wrench required (included)

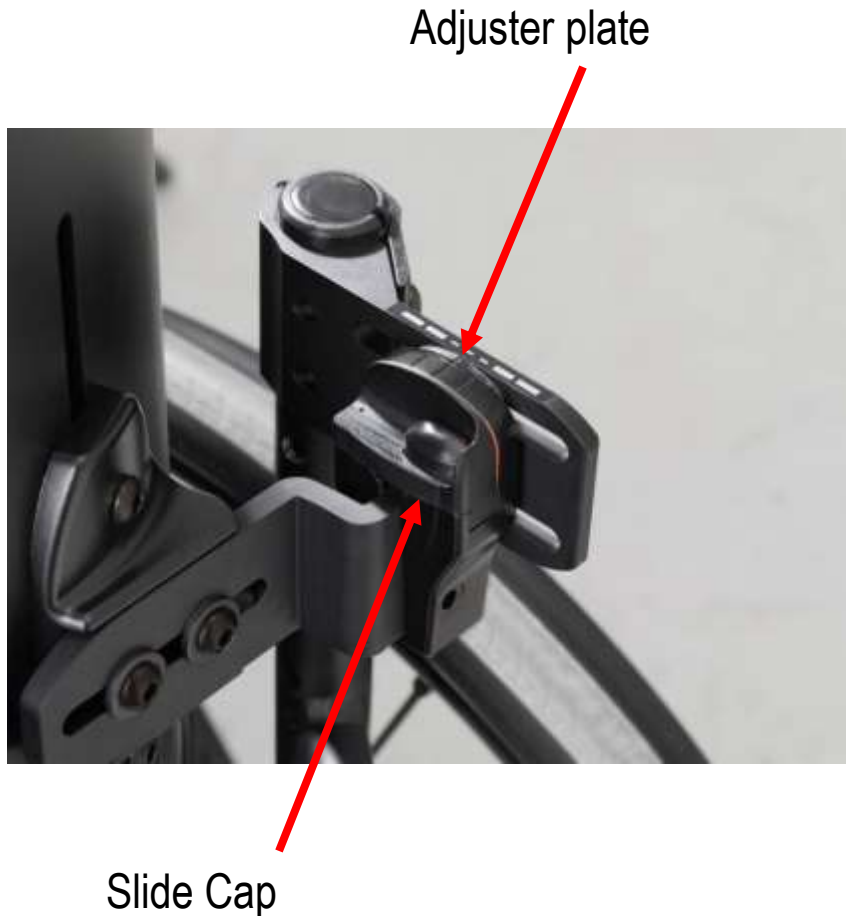


# Hardware Components



- Cane bracket
  - Fits 1" (25 mm) round canes
  - -Shims available to fit 7/8 (22 mm) and 3/4 in. (19 mm) canes
  - Will not slip
- Holster
  - Guides slide bracket easily into place
  - Adjusts to  $\pm 20$  degrees of recline
  - Slides for depth adjustment of 1.5 in (4 cm)
  - Scale on top for angle adjustment

# Hardware Components



- Adjuster plate
  - Positive locking design
  - Teeth allow recline adjustment in 2° increments
- Slide Caps
  - Ergonomic design
  - Simple operation

# Shims

- Secure Design
  - Urethane material
  - Press in place
  - Will not slide on canes
    - Clean canes prior to installation if oily
    - Alcohol pads included
- Sizes included with hardware
  - 1/8 in. (3 mm)
  - 1/4 in. (6 mm)





# Other Features

## Aluminum shell

- Ergonomic Design
  - Handle with kick out
  - Lateral positioning
    - Less in hip area to accommodate more body shapes
    - Improved in trunk area to provide more support
    - Deep Back redesigned with same principles for fixed laterals
- Streamlined Design
  - Smooth contours
  - Pad printed logo



# Other Features

- Cushion designed with the user in mind:
  - Adjustable air-foam cushion
  - Dual stiffness foam
    - Thicker and softer foam protects spine
    - Stiffer more firm foam provides positioning
  - Resized with features to protect the user
    - Roll over top
    - Larger to increase overlap around shell edges
    - Four channels prevent bunching of foam inside cover
  - Four channels ensure cohesive fit with shell without bunching



# Other Features

- Innovative cushion cover design
  - Spacer knit material
    - Improves air flow for temperature and moisture control
    - Does not pill as easily as other mesh fabrics
  - Reticulated foam
    - Improves air flow for temperature and moisture control
    - Assists with pressure distribution



# Other Features

## Enhanced Roll Over Design:

- Featured on Low and Mid models
- Provides additional protection for user
- Neoprene fabric is sewn to cover provides flexible protection
- Cushion is attached to cover with hook and loop
  - Will not slide down inside cover
  - Functions as protective layer inside the roll over



# Other Features

- Machine washable cover (air dry only)
- Meets ISO 7176-16
  - International standard for resistance to ignition for upholstered wheelchair parts
  - No progressive smoldering or flaming (self extinguishes) when lit with a cigarette

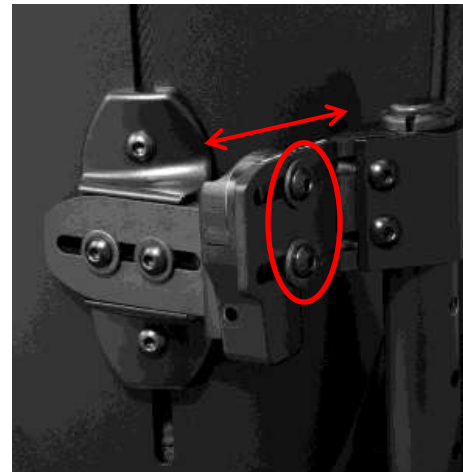
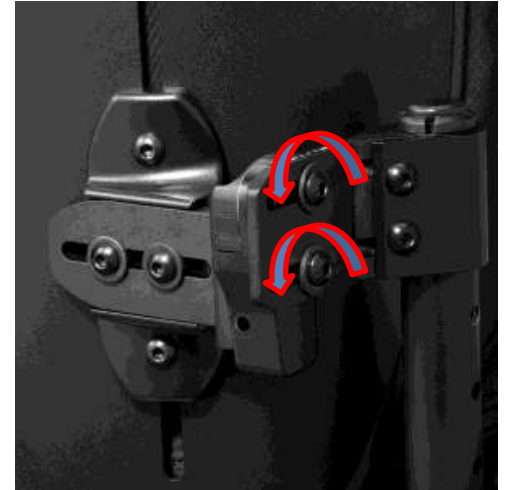
# Installation Instructions

- Quick and easy
- Hardware is pre-assembled
- Clean canes with alcohol pads if greasy
- Attach the 2 cane brackets
- Loosen slide bracket screws
- Insert back support
- Tighten slide bracket and cane bracket screws

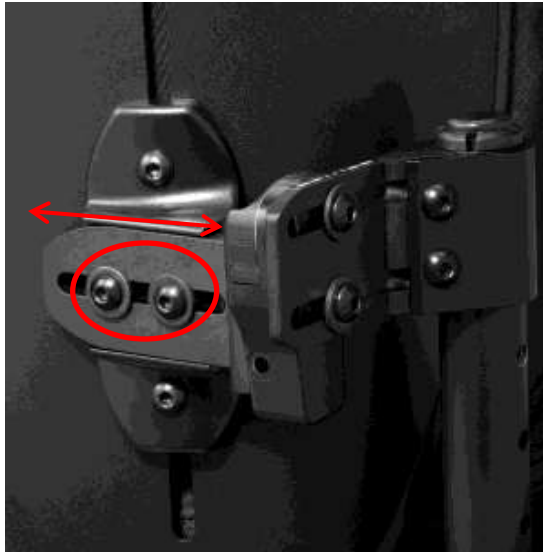
# Hardware Adjustment

## Depth and Angle Adjustment

- Loosen adjustment screws  $\frac{3}{4}$  of a turn only
- Slide and/or rotate hardware to desired position
- Use reference marks on top of holster for incremental adjustments
- Tighten adjustment screws
- Loosen slide bracket screws to allow centering of hardware
- Tighten slide bracket screws



# Hardware Adjustment

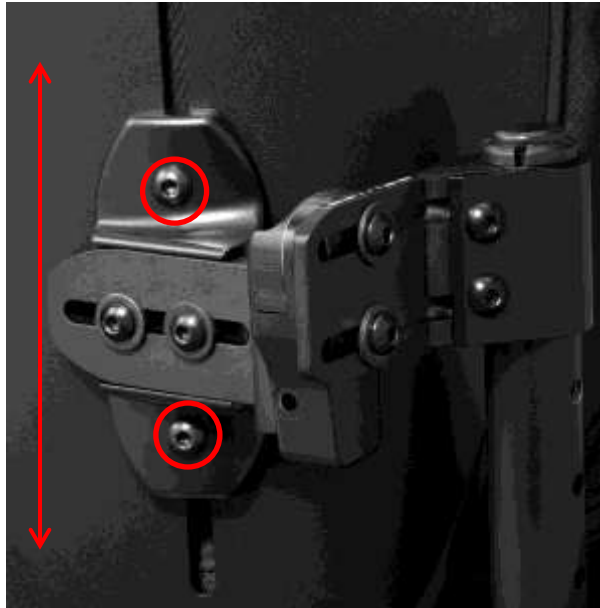


## Horizontal Shell Adjustment

- Loosen the 2 slide bracket screws on each side
- Move shell laterally to desired position
- Retighten the screws



# Hardware Adjustment



## Vertical Shell Adjustment

- Loosen 2 screws on each side of the shell bracket
- Slide shell vertically to desired position
- Retighten screws

# Troubleshooting

If the back system is binding with removal...

- Allow slide brackets to “self center”
  - Loosen slide bracket screws on both sides
  - Allow brackets to move so that there is room in holsters
  - Retighten slide bracket screws
  - This should be done after any hardware adjustments

# Troubleshooting

- Check cane brackets
  - Make sure they are the same height
  - Flag portions should be parallel
- Check angle adjustment
  - Look at holsters to make sure the angle is same on each side
  - To correct:
    - loosen top adjustment screw  $\frac{3}{4}$  turn
    - press backrest backwards
    - tighten screw while holding backrest backward
    - repeat slide bracket self centering



# Installation Configurations

- Basic Installation
  - Each back system ships with slide brackets pre-assembled in this configuration
  - Cane brackets face rearward
  - Slide bracket face forward
  - Seat depth adjustability will meet most average needs
  - Shell will move from 2.4” posterior of the canes to 0.9” posterior of the canes



# Installation Configurations

- Extra Depth Installation
  - Increases range of seat depth adjustment an additional 1.5” from basic installation
  - Cane bracket facing rearward
  - Slide bracket facing rearward
  - Shell moves from 3.9” posterior of canes to 2.4” posterior of canes



# Installation Configurations

- Growth Installation
  - Will take up seat depth for desired circumstances such as growth set up for pediatrics
  - Cane bracket facing forward
  - Slide bracket facing rearward
  - Shell will move from 0.3” anterior of the canes to 1.8” anterior of the canes

Note: This configuration requires the holsters to be removed and reversed so the slide caps open away from the chair.



# Installation Configurations

- Extra Growth Installation
  - Will take up seat depth for desired circumstances such as growth set up for pediatrics
  - Cane bracket faces forward
  - Slide bracket faces forward
  - Shell will move from 1.8" anterior of the canes to 3.3" anterior of the canes

Note: This configuration requires the holsters to be removed and reversed so the slide caps open away from the chair.



# Use of Secondary Supports



- PAL™ Swing Away or Fixed Laterals
  - Compatible with Mid and Tall models
  - Can be installed using existing slots and drilling holes in the shell
  - Shell can be further drilled for alternate placement



# Use of Secondary Supports

- The shell may be drilled to install other supports without voiding the warranty
  - Head Supports
  - Chest Harnesses
  - Chest Belts
  - Hip Pads



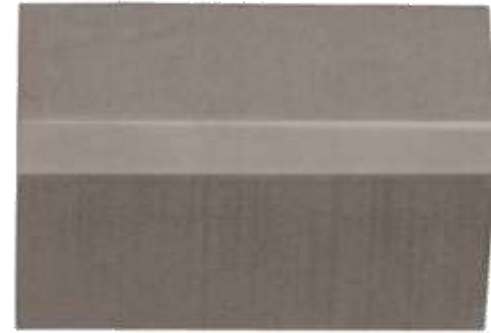
# Supplemental Supports

- PSIS Block (Posterior Superior Iliac Spine)
  - Supports the pelvis at the level of the PSIS
  - Promotes neutral pelvis and spinal extension
  - May accommodate anterior pelvic tilt
- Supplemental Lateral Supports
  - Can be placed to provide extra lateral support or improve fit
  - May help accommodate scoliosis or other postural deformities



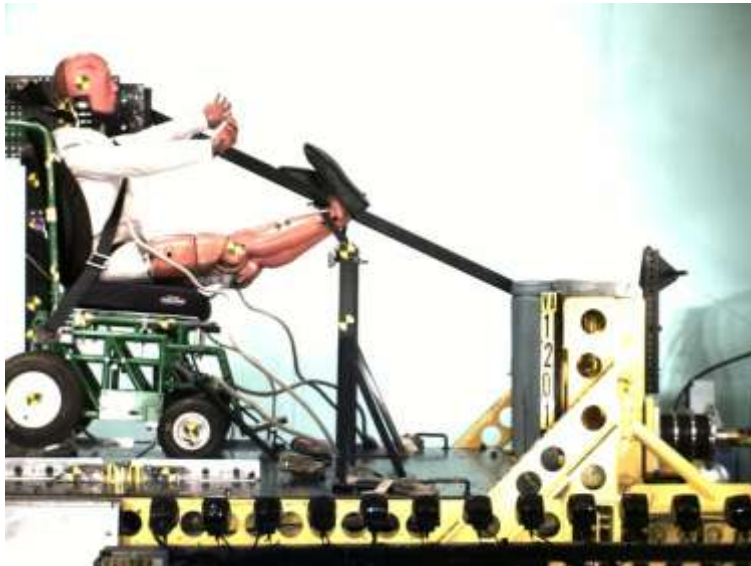
# Supplemental Supports

- PSIS Block and Supplemental Lateral Support
  - Can be used for additional positioning.
- Cheat Sheets™
  - Closed cell foam sheets
  - Peel and stick adhesive
  - Can be cut to custom shapes to be used for additional positioning or padding



# Crash Tested

Icon Back System Tall and Deep Backs have been dynamically tested and meet the requirements of ANSI/RESNA WC20/ Vol 4 and conform with ISO 16840-4 for safe use of seating devices in motor vehicles when used with a wheelchair base that complies with ANSI/RESNA WC 19 and 7076-19.



## **WARNING**

This seating system has been dynamically tested and meets requirements of ANSI WC20/Vol 4 and conforms to ISO 16840-4 for the safe use of seating devices for use in motor vehicles when used with a wheelchair base that complies with performance requirements of ANSI WC19 or ISO 7176-19.

A surrogate wheelchair base and Hybrid III Midsize Male ATD were used in the frontal impact test.

Any postural support devices and belts that have not been successfully tested in accordance with ANSI/RESNA WC18 or WC19 should not be relied upon as an occupant restraint in a vehicle.

Failure to use the appropriate equipment for restraint in a vehicle can result in serious injury or death.

For additional information regarding the use of seating systems in motor vehicles, refer to *Safe Use in a Motor Vehicle* provided with this system and at [www.varilite.com](http://www.varilite.com)

# Crash Tested

- Icon Low Back and Icon Mid Back do not meet the requirements of ANSI/RESNA WC20/Vol 4 or conform with ISO 16840-4 for safe use of seating devices in motor vehicles
- For more information the Ride Safe brochure is available at [www.varilite.com](http://www.varilite.com)
- It is generally safest for wheelchair users to transfer to a vehicle seat and use the vehicle seat belt system or child safety seat

## WARNING

This seating system does not meet requirements of ANSI WC20/Vol 4 or conform to ISO 16840-4 for the safe use of seating devices for use in motor vehicles.

To avoid serious injury or death, do not use this seating system in a motor vehicle.

For additional information regarding the use of seating systems in motor vehicles, refer to *Safe Use in a Motor Vehicle* at [www.varilite.com](http://www.varilite.com).

## Ride Safe

Information to help you travel more safely  
in motor vehicles while seated in your wheelchair.



# HCPCS Code Information

- Low: **E2613** Positioning wheelchair back cushion, posterior width less than 22", any height including any type of mounting hardware
- Mid: **E2615** Positioning wheelchair back cushion, posterior-lateral, posterior width less than 22", any height, including any type of mounting hardware
- Mid Bariatric: **E2616** Positioning wheelchair back cushion, posterior-lateral, posterior width 22" or greater, any height, including any type of mounting hardware
- Tall: **E2615** Positioning wheelchair back cushion, posterior-lateral, posterior width less than 22", any height, including any type of mounting hardware
- Deep: **E2620** Positioning wheelchair back cushion, planar back with lateral supports, width less than 22", any height, including mounting hardware
- Replacement Covers- **E2619**

Visit [www.varilite.com](http://www.varilite.com) for the most current product information. The following documents are available for download:

- Technical Guide for the Icon Back System
- Brochure
- Installation Instructions
- User Manual
- HCPCS Codes and reimbursement info (US customers)
- Ride Safe brochure