



IMPORTANT PRODUCT INFORMATION

JUNIOR *BACK SUPPORT* *User Manual*

Important Note for Dealers:
Please provide the User or Caregiver with this manual.

***Important Note for
Back Support Users and
Caregivers:*** Please keep this
manual for future reference.

If you do not understand
this instruction manual or
if you have any questions,
please contact **VARILITE**
Customer Service at
(800) 827-4548 or
(206) 505-9500.





Table of Contents

This User Manual explains how to care for, maintain, and adjust your VARILITE JUNIOR Back Support.

Warnings	pages 3-5
Operation	pages 6-8
Thoracic Support Instructions	page 9
Care and Maintenance	page 10
Warranty	page 11

Important Note for Suppliers:

Please provide the User or Caregiver with this manual.

Important Note for VARILITE JUNIOR Back Support Users and Caregivers:

Please keep this manual for future reference.

If you do not understand this *User Manual* or if you have any questions, please contact VARILITE Customer Service at 1-800-827-4548.



TO AVOID INJURY, read, understand and follow all instructions and warnings in this manual before using your JUNIOR Back Support.

There are hazards associated with the use of wheelchairs and adaptive equipment. If you misuse your wheelchair or your back support you can be seriously injured.

WARNING

Installation and adjustment of your *VARILITE* back support should be performed only by an authorized dealer or qualified therapist.

Failure to use the appropriate equipment for restraint in a vehicle can result in serious injury or death.

Never use your *VARILITE* back support if any hardware is missing, malfunctioning, or broken.

- Seek qualified assistance with any repairs or adjustments.
- Never exceed the weight capacity of the back support. Maximum user weight for systems less than 12 in. (30 cm) wide is 100 lbs (45 kg).



WARNING

- Never exceed the weight capacity of the wheelchair as specified by the wheelchair manufacturer.
- Never perform weight training that causes you to exceed the weight capacity of the wheelchair.
- Do not exceed the weight capacity of the wheelchair during other activities of daily living.
- Never lift the wheelchair by the back support.
- Never use the back support without its cover; the cover is made with flame retardant materials. Using the back support without its cover increases the risk of flammability.
- Never modify the back support or use it in a way not described by these instructions.

WARNING

Do not leave the Slide Caps in the open position. Doing so may allow the Slide Brackets to disengage from the Holsters, causing the back support to accidentally fall out, which can result in serious injury.

 **WARNING**

VARILITE back supports are designed to be compatible with most wheelchairs, noting the following exceptions:

The back supports can be used only with wheelchairs with round canes.

The back support can be used only with wheelchairs with cane diameters equal to 1 in. (25 mm) or less.

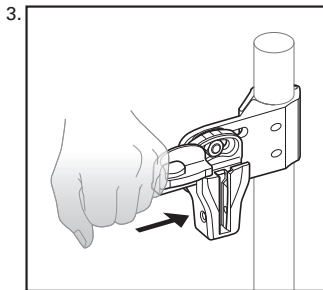
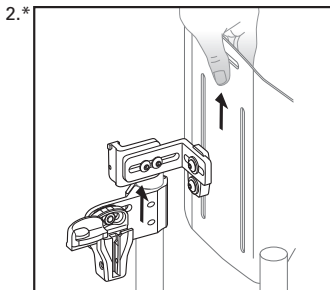
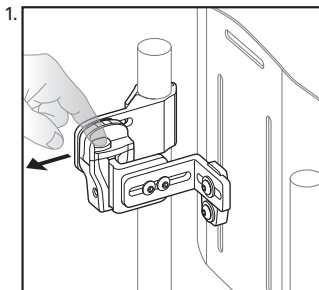
Wheelchairs are not required to have stabilizer bars, provided the canes can maintain their position.

Failure to use compatible equipment can result in equipment breakage and serious injury.



Operation

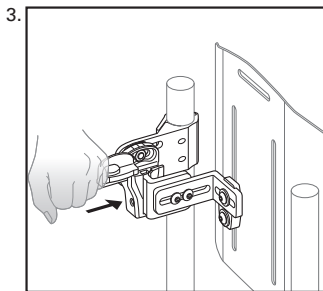
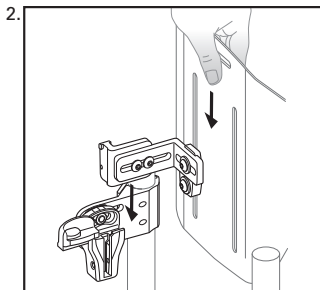
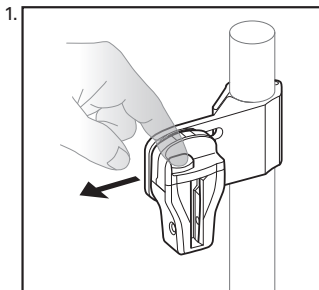
Removing Back Support



*Note: When Permanent Mount Screws are engaged Slide Brackets cannot be removed from the Holster.



Installing Back Support





Inflating Cushion

1. Remove load from cushion.
2. Open air valve by turning counterclockwise.
3. When cushion is fully inflated, close air valve by turning clockwise.

Adjusting Cushion

1. To adjust the air level of the cushion, begin with the cushion fully inflated and the valve closed.
2. Position wheelchair user securely in wheelchair.
3. Turn the valve counterclockwise to open the valve and release air.
4. Close the valve when the air level that provides the support needed for the user's comfort and functionality is reached.

Removing Cushion

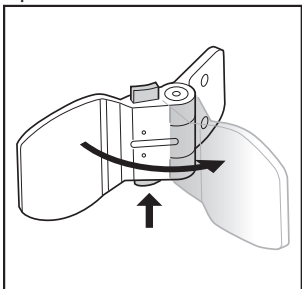
1. Pull the cushion up to detach the cover from the Shell.
2. Detach the Handle Flap from the Handle Patch on the inside of the Shell and pull the Handle Flap through the slot in the Shell.
3. Remove the back cushion from the attached flap on the inside of the cover.

Thoracic Support Instructions

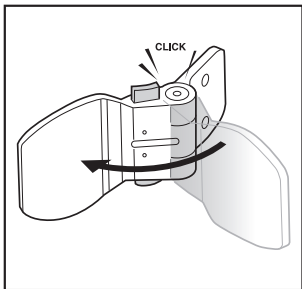
Your back system may include optional VARILITE PAL™ Swing-Away thoracic supports.

Operating Instructions:

Open



Close



Maintenance:

- Wash pad covers in cold water. Air dry.
- Clean metal parts with soft cloth and isopropyl alcohol. Do not use soap-based products.
- NEVER oil the hinge mechanism.



Care and Maintenance

- The aluminum shell can be cleaned with soap and warm water. Do not saturate. Avoid getting water under the edge trim.
- The self-inflating cushion can be wiped with a damp cloth.
- The cushion cover can be removed and washed. Machine wash at 140° F (60° C). Air dry. For best result keep zipper closed.
- Never store your back support in conditions of extreme heat or exposure to direct sunlight for long periods of time.
- Never store sharp or heavy objects on top of your back cushion.
- Once a week, leave valve open overnight, allowing cushion to fully inflate in an unloaded state.



Warranty

The VARILITE Product Warranty can be found in the Installation Instructions provided with this system and online at www.varilite.com

Please complete and return the Product Registration form that came with this back support. The Product Registration form can also be completed online at www.varilite.com.

VARILITE
4000 1st Ave. S
Seattle, WA 98134
1-800-827-4548
www.varilite.com

Authorized Representative:
Cascade Designs, Limited
Dwyer Road, Midleton, Co. Cork
Republic of Ireland



