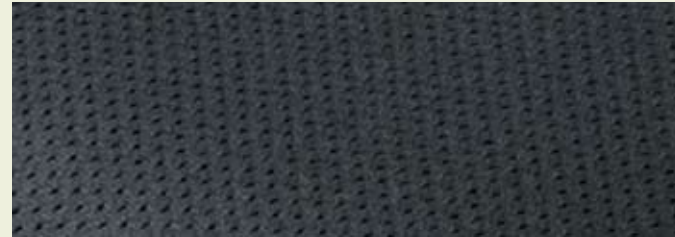


## Back Components



### Two-Way Valve

VARILITE cushions are self-inflating. Sitting on a fully inflated cushion, turn the valve counterclockwise to open the valve and release air. Close the valve when the air level that provides the support you need for comfort and functionality is reached.



### Mesh Cover

The VARILITE mesh cover is made of four-way-stretch mesh. Reticulated foam inside promotes air exchange and improves pressure distribution. The underside is a rugged nonslip material with hook and loop for added security. The VARILITE mesh cover meets ISO 7176-16 ignition resistance standards for upholstered wheelchair components. Machine washable.

## Mounting Hardware

### Improved Back Hardware

The back system hardware is constructed of high strength, low weight metal. Seat to back angle can be easily adjusted without losing seat depth with client in the wheelchair. The back system hardware offers up to 15 degrees recline.



Easy Adjustments



Metal Hardware

### Regular Pin Bar



### Extended Pin Bar



### New Pin Bars

Pin bars for VARILITE Evolution Back systems are available in regular or extended lengths. Extended pin bars allow for even greater seat depth and angle adjustability. Extended pin bars are standard with the Evolution Back Deep and optional on Evolution Back regular and tall sizes.

### Talon™ Hardware

Talon hardware attaches to a rigid wheelchair's stabilizer bar. Its mounting bracket provides adjustment in three directions—height, depth, and angle—and is available in three lengths to permit a range of posterior and anterior positioning.



## Lateral Supports



### PAL™ Swing-Away Lateral Support

VARILITE PAL™ swing-away thoracic supports are designed to complement regular and tall Evolution Back™ systems. PAL (Positive Action Lateral) supports allow hinge angle, pad rotation, and horizontal pad adjustments for a precise fit. All PAL swing-away lateral supports include a neoprene cover that attaches easily to the PAL push button hinge.



### Fixed Lateral Support

Fixed lateral supports are available for situations when a swing-away lateral is not required. Fixed lateral supports consist of shell bracket, pad bracket and pad.

## Back Accessories



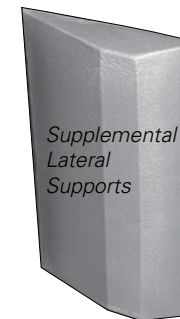
### PSIS Block

The PSIS (posterior superior iliac spine) block provides support to the sacrum at the PSIS level, promoting an anterior pelvic tilt and spinal extension.



### Supplemental Lateral Supports

The Supplemental Lateral Pads helps users who lean to one side maintain an upright position, and are especially beneficial for geriatric clients.



Supplemental Lateral Supports

## BackRest™



### BackRest™

The BackRest relieves the stress and fatigue that cause backache, and provides support and positioning for the spine to promote healthy posture.



# Back Supports Selection Guide

Postural Support Solutions



# Back Systems

Postural Support Solutions



VARILITE is the leader in ultra-lightweight Air-Foam Floatation wheelchair seating systems and back supports. Air-Foam Floatation combines the best characteristics of air and foam to provide excellent pressure distribution, comfort and stability. Our family of postural support systems includes seat cushions, back supports, secondary supports, and seating accessories.

	GENERAL USE			POSITIONING BACK		
	<b>eBack™</b>	<b>eBack™ Tall</b>	<b>Talon™</b>	<b>Evolution Back™</b>	<b>Evolution Back™ Tall</b>	<b>Evolution Back Deep™</b>
	The eBack is an ideal general use back for wheelchair users with basic support needs. The eBack provides lightweight, comfortable support.	The eBack Tall is an ideal general use back for wheelchair users with basic support needs and who need more trunk support.	The Talon offers unequalled pelvic support and comfort. The Talon positions clients with spinal-cord injury by supporting the PSIS.	The Evolution Back is an ideal positioning back for wheelchair users with moderate to maximum support needs.	The Evolution Back Tall is an ideal positioning back for wheelchair users with moderate to maximum support needs, and those in need of more trunk support.	The Evolution Back Deep is ideal for wheelchair users with moderate to maximum support needs. Deep contouring and extra lateral support are ideal for the geriatric user, or anyone with poor trunk control.
<b>Cushion Composition</b>	Air-Foam Floatation	Air-Foam Floatation	Air-Foam Floatation	Air-Foam Floatation	Air-Foam Floatation	Air-Foam Floatation
<b>Shell Compositopn</b>	aluminum	aluminum	aluminum	aluminum	aluminum	aluminum
<b>Hardware Composition</b>	metal	metal	metal	metal	metal	metal
<b>Cover Type</b>	mesh	mesh	mesh	mesh	mesh	mesh
<b>Valve Type</b>	standard	standard	standard	standard	standard	standard
<b>Back Angle Recline</b>	15°	15°	90°	15°	15°	25°
<b>Seat Depth Adjustment</b>	3"	3"	1/4"	3"	3"	5"
<b>Attachment Location</b>	back canes	back canes	stabilizer bar	back canes	back canes	back canes
<b>Upper Trunk Positioning</b>	☑	☑		☑	☑	☑
<b>Lower Trunk Positioning</b>	☑	☑	☑	☑	☑	☑
<b>Lateral Trunk Positioning</b>						☑
<b>Lateral Support Compatible</b>	☑	☑		☑	☑	
<b>Weight (18 in.)</b> <small>(includes all hardware)</small>	4.2 lbs	5.1 lbs	1.9 lbs	4.2 lbs	5.1 lbs	6.3 lbs.
<b>Pediatric Sizes</b>	☑	☑		☑	☑	☑
<b>Bariatric Sizes</b>	☑			☑		
<b>HCPCS Code</b>	E2611/E2612	E2611	E2611	E2613/E2614	E2613	E2620

4000 1st Avenue South  
Seattle, WA 98134  
Phone: (800) 827-4548  
Toll Free Fax: (800) 363-7739  
Fax: (206) 343-5795  
www.varilite.com

Authorized EU Representative:  
Cascade Designs, Limited  
Dwyer Road, Midleton, Co. Cork  
Republic of Ireland



© 2007 Cascade Designs, Inc. 33-158

Maintenance: Once a week, allow your VARILITE cushion to fully inflate overnight with valve(s) open. Warranty: 2 Years, excluding cushion cover.